

Environmental Considerations



Noise and Vibration

- What will be the impact of additional trains on surrounding neighborhoods?
- Will trains need to blow horns at each grade crossing?
- Will Quiet Zones be in place?



Neighborhood Quality of Life

- Will new stations support with local plans?
- Will new stations cause changes in surrounding neighborhoods?
- What might we expect? What is the likelihood that the new stations will attract new employment or housing?
- Will historic resources be affected?



Safety

- How frequently will transit vehicles travel through the corridor?
- How fast will they travel?
- Will crossing gates or other warning devices be installed at crossings?
- What kind of pedestrian and bicycle safety measures can we expect?



Traffic and Parking

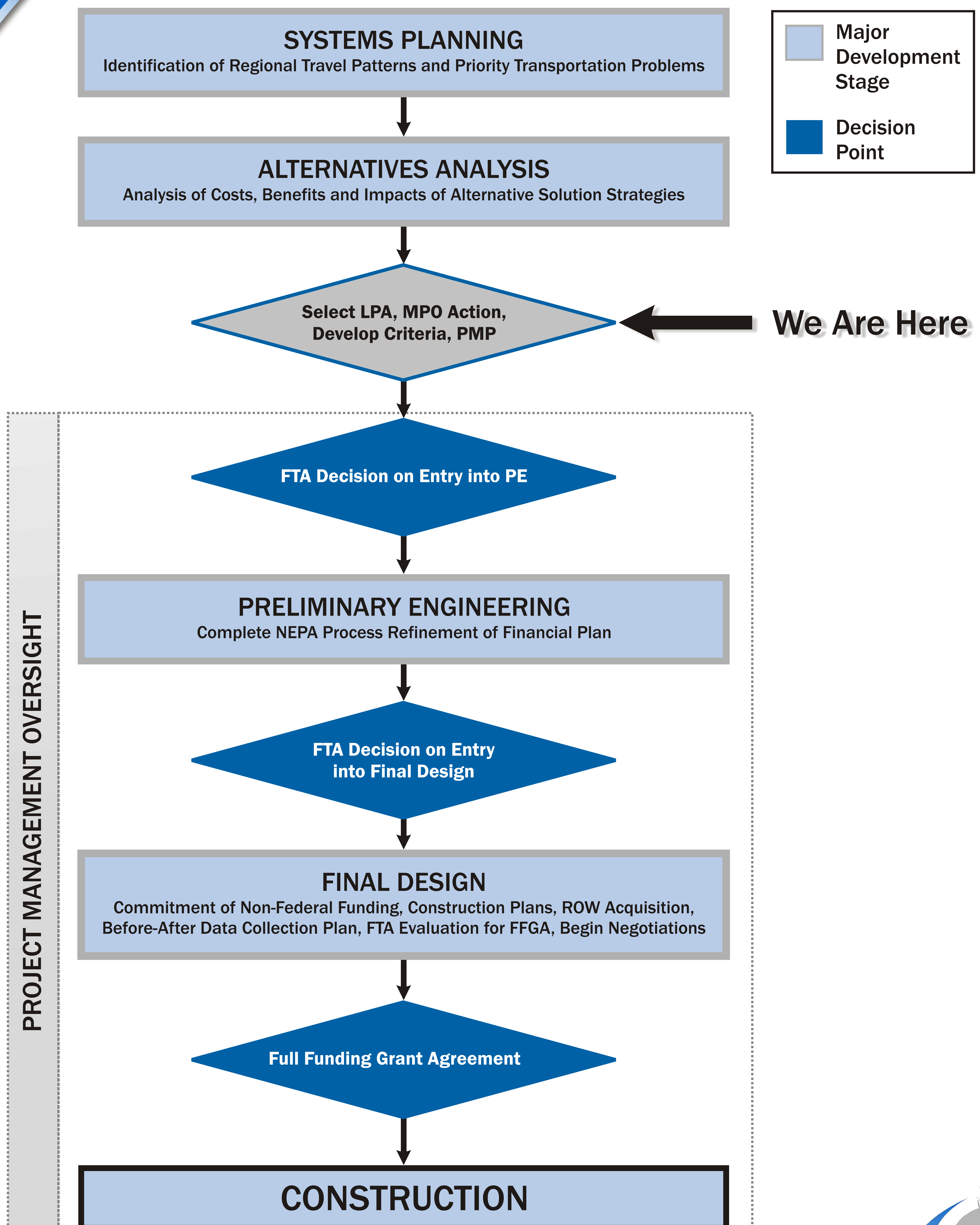
- Will traffic queues at cross streets increase at grade crossings?
- How would parking be affected by street-running technology?
- How many cars can we expect at park and ride lots, and how will that affect local traffic?



Natural Environment

- How will the alternatives affect air quality?
- Will wetlands, streams or water quality be affected?

New Starts Process Overview

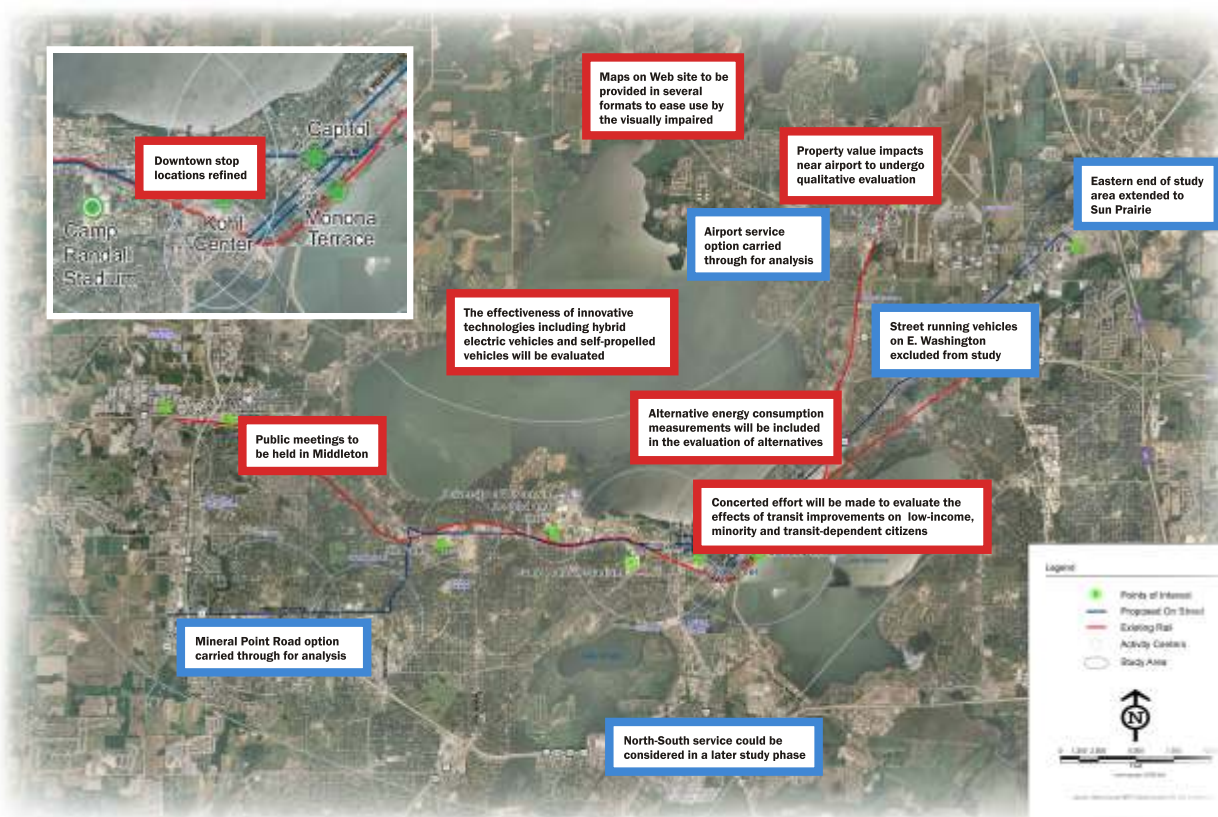


Transport 2020 Goals

- ▶ **Goal 1:** Promote efficient land use/development patterns in Madison and Dane County.
- ▶ **Goal 2:** Improve mobility for people and goods, and provide/enhance transportation choices.
- ▶ **Goal 3:** Improve and enhance economic development and employment opportunities and expand access to jobs.
- ▶ **Goal 4:** Enhance the natural and social environment.
- ▶ **Goal 5:** Develop a cost-effective transportation system improvement strategy that maximizes community consensus and institutional support.

Public Participation: Results of Scoping

 Comments regarding refinements to the alternatives
 Comments regarding changes to the study process



Public participation is crucial in developing a transportation system that meets the needs of all Dane County residents.

More than 120 citizens attended a scoping meeting in April to refine the scope of the Transport 2020 study and to comment on the alternatives being evaluated. While the many comments related to tasks already being undertaken by the study team, public input also contributed to the study in a number of ways, both in refining the study process and in developing the alternatives to be carried forward for further study.

A report summarizing scoping activities and all stakeholder comments is available on the study Web site, www.transport2020.net. Numerous further opportunities for public participation will be provided.